



**Mediterranean  
Action Plan**  
Barcelona  
Convention



⋮ **INFO/RAC**  
⋮ **National Focal Points Meeting**  
Rome, Italy **7-8 June 2023**

# InfoMAPNode

The geoportal for sharing  
geospatial data



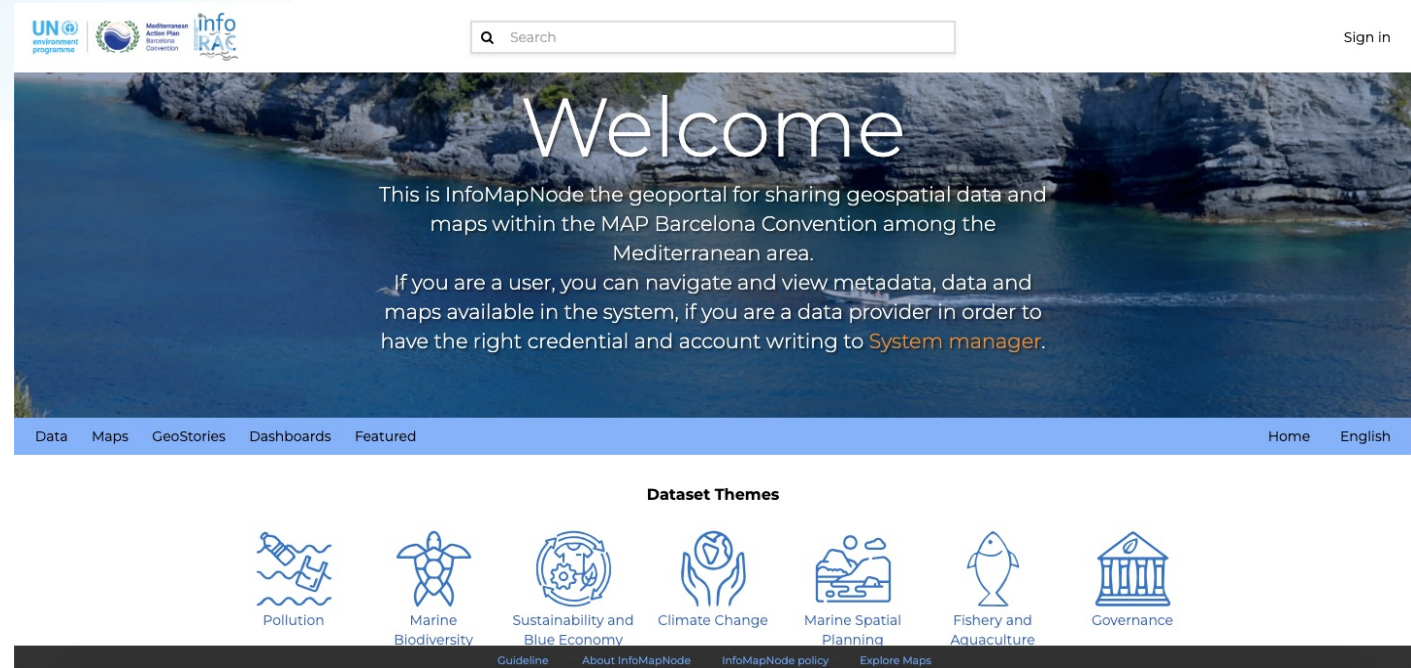
Mediterranean  
Action Plan  
Barcelona  
Convention



- INFO/RAC
- National Focal Points Meeting
- Rome, Italy 7-8 June 2023

# What is InfoMAPNode?

- InfoMAPNode is an open source geoportal for sharing different levels of geospatial data and maps and to expose all relevant metadata in the Mediterranean Area, with a specific focus on Barcelona Convention
- InfoMAPNode represents the entry point for InfoMAP Spatial Data and Metadata catalogue



# Functionalities

- Upload, manage and share geospatial and not-spatial data;
- Create and edit metadata;
- Create and share interactive maps;
- Collaborate and interact with other users or group of users;
- Create GeoStories
- Create Dashboards and graphs

# Functionalities

1. InfoMAPNode represents the entry point for InfoMAP Spatial Data and Metadata catalogue
2. InfoMAPNode allows to import remote services from UNEP/MAP SDI as well as the other RACs spatial information systems
3. InfoMAPNode provides free and accessible SDI for CPs and National purpose, allowing to create map using spatial information from different sources and supporting decision makers and public authority

# InfoMAPNode upgrade

1. Upgrade of GeoNode
2. Upgrade of GeoServer
3. Data harvesting
4. Implementation of GeoStories building engine
5. Improvement of Dashboard building engine

# Data Harvesting

List of UNEP-MAP database harvested:

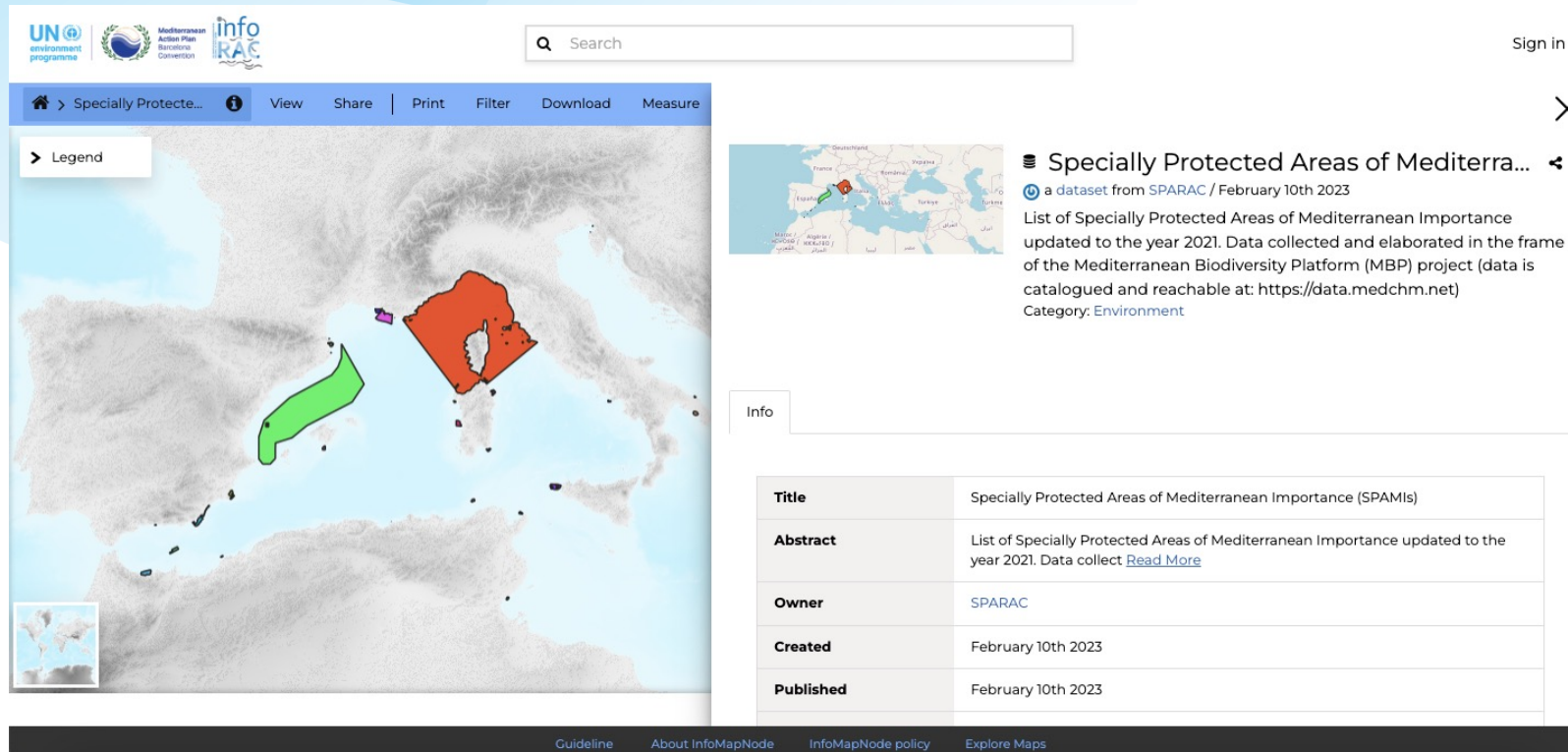
1. REMPEC Medgismar dataset
2. SPA/RAC Geoserver instance
3. UNEP-GRID (Geneva) Geoserver instance, containing layers from Plan Bleu and Medwaves (before SCP/RAC)

List of remote services imported:

1. FAO
2. Portodimare
3. EEA
4. ISPRA geoserver

# Data Harvesting

## SPA/RAC Geoserver: Specially Protected Areas of Mediterranean Importance (SPAMIs)



The screenshot displays the SPA/RAC Geoserver interface. At the top, there are logos for the UN Environment Programme, the Mediterranean Action Plan Barcelona Convention, and infoRAC. A search bar is located on the right. Below the logos, there is a navigation bar with options: Home, Specially Protected..., View, Share, Print, Filter, Download, and Measure. A legend is visible on the left side of the map. The main map shows the Mediterranean region with several areas highlighted in green and red. A metadata panel on the right provides details about the dataset.

**Search**

Sign in

> Specially Protecte... View Share Print Filter Download Measure

> Legend

**Specially Protected Areas of Medittera...**  
a dataset from SPARAC / February 10th 2023  
List of Specially Protected Areas of Mediterranean Importance updated to the year 2021. Data collected and elaborated in the frame of the Mediterranean Biodiversity Platform (MBP) project (data is catalogued and reachable at: <https://data.medchm.net>)  
Category: Environment

Info

<b>Title</b>	Specially Protected Areas of Mediterranean Importance (SPAMIs)
<b>Abstract</b>	List of Specially Protected Areas of Mediterranean Importance updated to the year 2021. Data collect <a href="#">Read More</a>
<b>Owner</b>	SPARAC
<b>Created</b>	February 10th 2023
<b>Published</b>	February 10th 2023

Guideline About InfoMapNode InfoMapNode policy Explore Maps



# Data Harvesting

## UNEP-GRID (Geneva) Geoserver: Waste production per capita in 2016 (MSSD indicator 20)

UNEP environment programme | Mediterranean Action Plan Barcelona Convention | info RAC

Search

Sign in

Waste production ... View Share Print Filter Download Measure

Legend

Waste production per capita in 2016 (...)  
a dataset from Plan Bleu / February 23rd 2023

In 2016, the overall situation is mixed: high waste generation is the North, high food part in the South and a low recycling rate at regional level. The total amount of Municipal Solid Wastes is slightly greater than 183 million tons, i.e. an average of 370 kg per capita per year (about 1 kg/cap/day). Source: [https://www.obs.planbleu.org/wp-content/uploads/2021/03/SMDD\\_Dashboard\\_Version\\_Mars\\_2021.pdf](https://www.obs.planbleu.org/wp-content/uploads/2021/03/SMDD_Dashboard_Version_Mars_2021.pdf)  
Category: Environment

Info

<b>Title</b>	Waste production per capita in 2016 (MSSD indicator 20)
<b>Abstract</b>	In 2016, the overall situation is mixed: high waste generation is the North, high food part in the <a href="#">S Read More</a>
<b>Owner</b>	Plan Bleu
<b>Created</b>	February 23rd 2023

Guideline About InfoMapNode InfoMapNode policy Explore Maps

# Data Harvesting

## REMPEC Medgismar: REMPEC Response Equipments

UN environment programme | Mediterranean Action Plan Barcelona Convention | info RAC

Search

Sign in

REMPEC Respons... View Share Print Filter Download Measure

Legend

REMPEC Response Equipments

a dataset from REMPEC / June 23rd 2022

Database of response equipment in the Mediterranean coastal States (MEDGIS-MAR) is updated by Mediterranean coastal States. Response equipment are classified by type of equipment and present only data from countries which provided their consent to make data publicly available.

Category: Environment

Info

<b>Title</b>	REMPEC Response Equipments
<b>Abstract</b>	Database of response equipment in the Mediterranean coastal States (MEDGIS-MAR) is updated by Medite <a href="#">Read More</a>
<b>Owner</b>	REMPEC
<b>Created</b>	June 23rd 2022
<b>Published</b>	June 23rd 2022

Guideline About InfoMapNode InfoMapNode policy Explore Maps

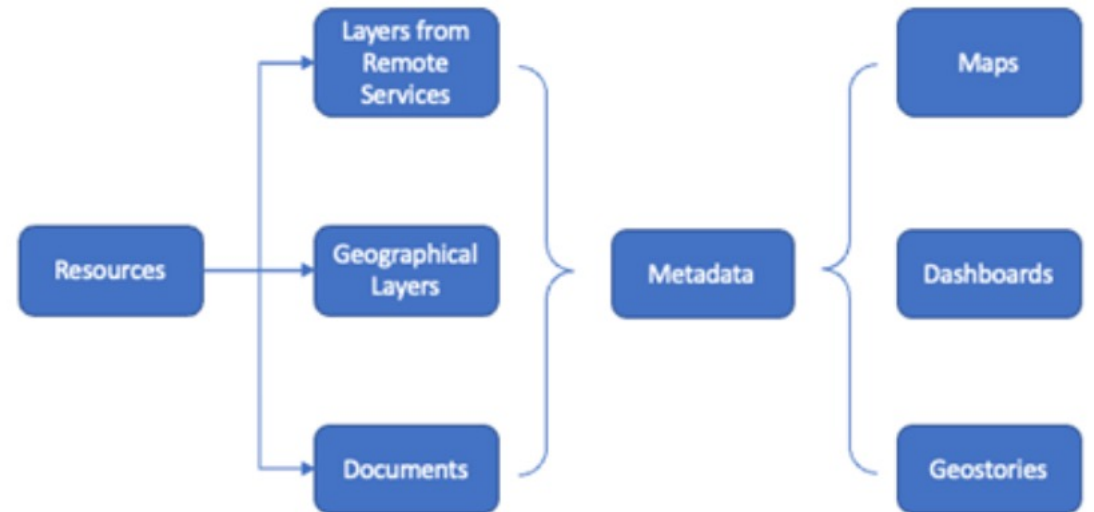
# Data and Contents

- 403 Layers
- 8 Maps
- 2 GeoStories
- 7 Documents

The screenshot displays the InfoMapNode web application interface. At the top, there are logos for UN Environment Programme, Mediterranean Action Plan Barcelona Convention, and Info/RAC. A search bar is located on the right. Below the navigation bar, there are icons for various dataset themes: Pollution, Marine Biodiversity, Sustainability and Blue Economy, Climate Change, Marine Spatial Planning, Fishery and Aquaculture, and Governance. The main content area shows a search result for '421 Resources found'. The results are displayed in a grid of cards, each with a map thumbnail and a title. The first card is titled 'Albania - CI16 Artificial and natural coastli...' and is associated with PAPRAC. The second card is 'The ACCOBAMS Survey Initiative (ASI) da...' and is associated with ACCOBAMS. The third card is 'Coastday - past events' and is associated with PAPRAC. The fourth card is 'UNEP-MAP Operational Communication ...' and is associated with admin. At the bottom of the interface, there are links for 'Guideline', 'About InfoMapNode', 'InfoMapNode policy', and 'Explore Maps'.

# Resources

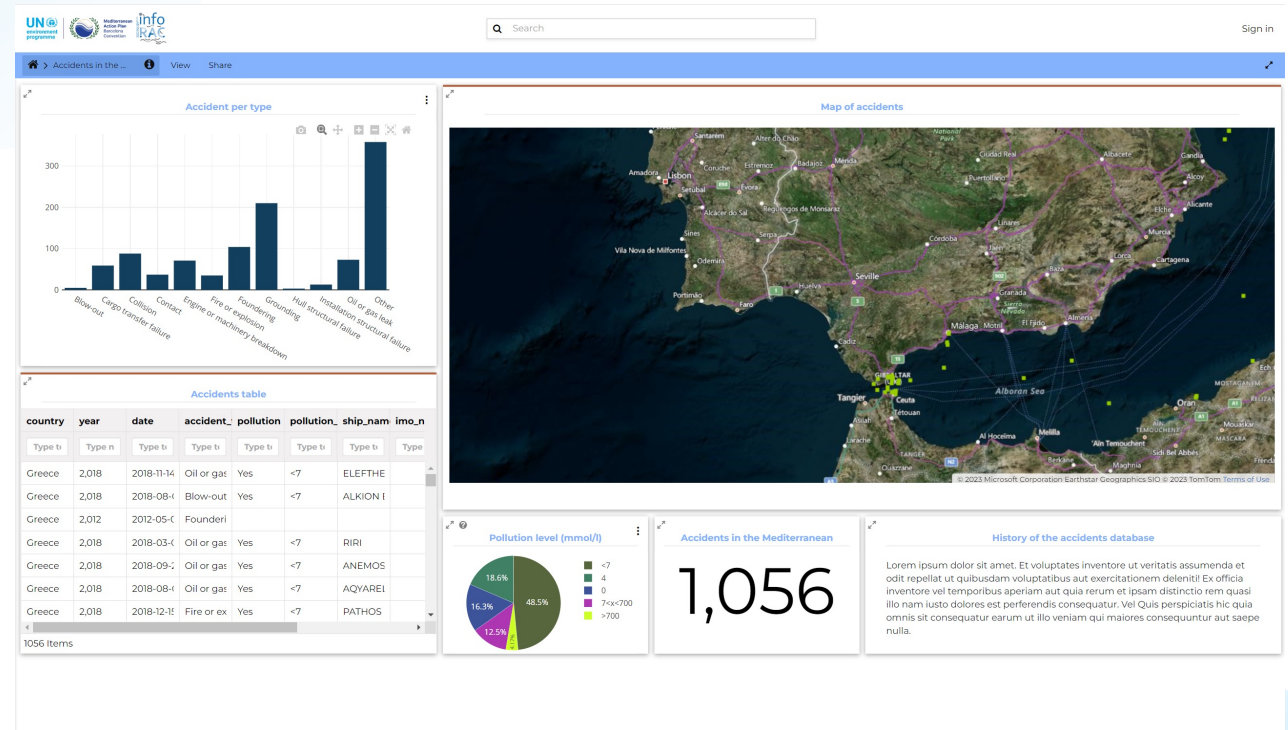
1. **Layers from remote services:** Layers harvested by remote services (WMS, Rest ARCGIS, etc)
2. **Geographical layers:** shapefiles and geographical layers uploaded locally
3. **Documents:** Documents and files
4. **Maps:** using uploaded datasets, combining them with other datasets
5. **Dashboards:** Integrated tool with maps, charts, tables, texts etc
6. **GeoStories:** immersive stories by combining text, interactive maps, and other multimedia



# Dashboards

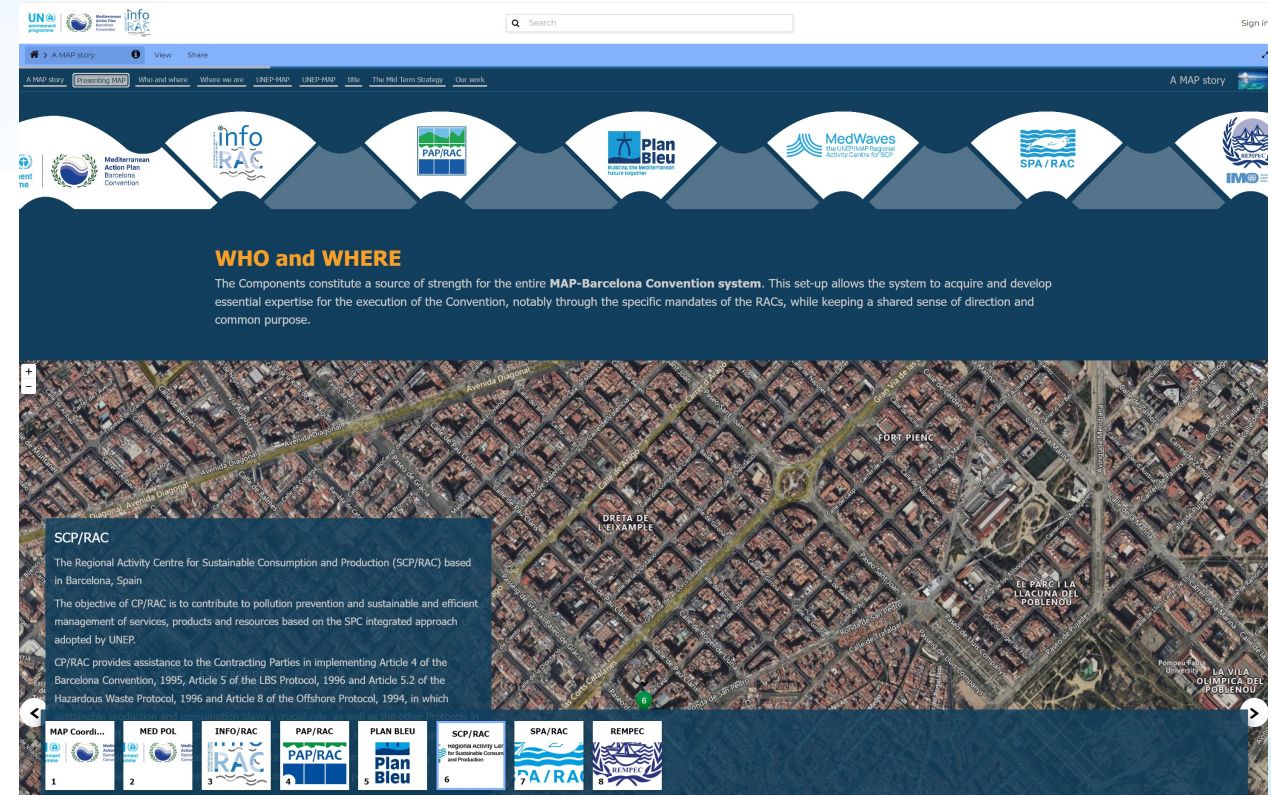
Dashboard is a MapStore functionality integrated in GeoNode that provides the user with a space to add charts, maps, tables, texts and counters, and can create connections between them in order to:

- Provide an overview to better visualize a specific data context
- Interact spatially and analytically with the data by creating connections between widgets
- Perform analysis on involved data/layers



# GeoStories

GeoStory is a MapStore functionality integrated in GeoNode that provides the user a way to create inspiring and immersive stories by combining text, interactive maps, and other multimedia content like images and video or other third-party contents. Through this tool you can simply tell your stories on the web and then publish and share them with different groups of GeoNode users or make them public to everyone around the world.



Mediterranean  
Action Plan  
Barcelona  
Convention



● INFO/RAC  
● National Focal Points Meeting  
● Rome, Italy 7-8 June 2023

# Groups

To improve usability of action management, InfoMAPNode provides user "Groups", which are collections of user accounts which can be used for the application. User groups function in a similar manner to user profiles, in that they can be used for a variety of functions including:

- The publication and sharing of content, tracking of content changes and notifications etc.
- The control of content permissions and actions
- The curation, cataloging and discovery of content



Mediterranean  
Action Plan  
Barcelona  
Convention



● INFO/RAC  
● National Focal Points Meeting  
● Rome, Italy 7-8 June 2023

## Explore Groups

Create a New Group

Total: 17 0 1 v

SEARCH

Search by name

GROUP CATEGORIES

- Stakeholders and research... 4
- CP 8
- MAP components 1
- INFO/RAC 2

UN environment programme

UNEP-GRID  
The Global Resource Information Database - Geneva (GRID-Geneva), is a partnership between the United Nations Environment Programme (UNEP), the Swiss Federal Office for the Environment (FOEN) and the University of Geneva (UniGe). With a team of 20 Environment Data Scientists, GRID-Geneva's main role ...

3 Members 3 Managers

CAMP Bosnia and Herzegovina  
CAMP Bosnia and Herzegovina

1 Member 1 Manager

Croatia  
All users who belong to the region of Croatia

1 Member 1 Manager

INFO/RAC  
The Regional Activity Centre for Information and Communication (INFO/RAC) was established in 2005 by the decision of the 14th Meeting of the Contracting Parties, thus substituting the Regional Activity Centre on Environment Remote Sensing (ERS/RAC) that was approved as MAP Regional Activity Centre b ...

5 Members 0 Managers

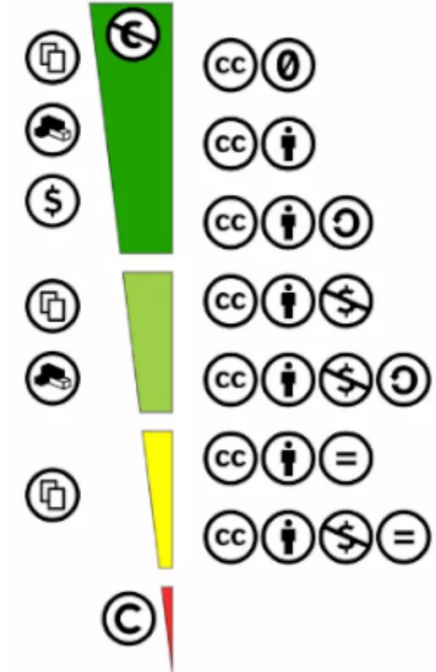
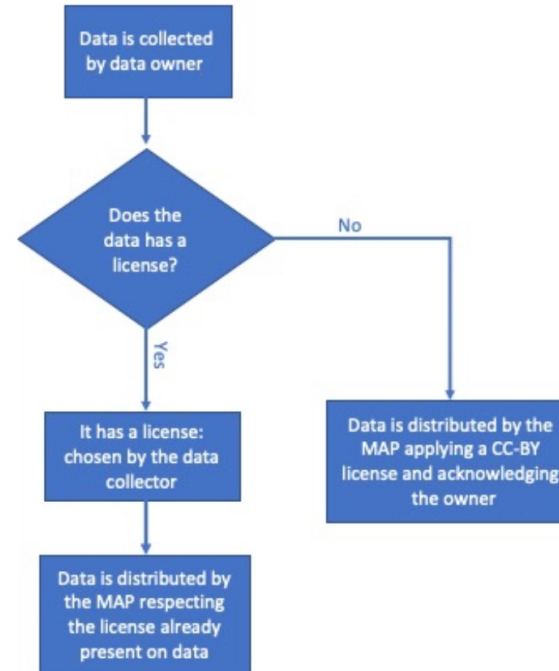
Bosnia and Herzegovina  
All users who belong to the region of Bosnia and Herzegovina

0 Members 0 Managers

< page 1 of 4 >

# License

For files published in or mirrored by InfoMAPNode by the RACs the principal Open Data license individuated by the policy is Creative Commons Attribution (CC-BY). Nevertheless, if data is originally shared by the data owner (which corresponds in most of the cases with data creator) with a less restrictive license (like CC-0 or Public Domain) or more restrictive licenses (such as CC-BY-NC or CC-BY-ND) it is necessary to transmit this license while data is shared following the workflow.





# User Nomination

- **MAP Component users:** Users which are staff of MAP Secretariat and Component; The subdivision is the following:
  - CU, other RACs and MAP Components
  - INFO/RAC as the administrator of InfoMAP Node.
- **Stakeholders:** stakeholders are a group of or single users that need (for different reasons) to access MAP data.
- **CP users:** a CP can use InfoMAPNode for National purpose, allowing to create map using spatial information from different sources and supporting decision makers and public authorities.

Inside a group of users referring to the same CP there could be different access levels after the competence of the user.

In 2022 the formal request for identification of users was sent to MAP FPs. Nominated CPs can be associated to specific restricted groups with restricted access to specific material, if necessary, and each CP can use this space for internal use also.

# User Access

	User	Is registered?	Can Upload?	Can Edit/Delete?	Can View?	Can Download?	Can Set Privileges?
Contracting Parties	CP	Yes	Yes	Yes, their data	Yes. Public and restricted material (following sharing regulations)	Yes. Public and restricted material (following sharing regulations)	No
	MAP CU and RACs (except INFO/RAC)	Yes	Yes	Yes, their data	Yes. Public and restricted material (following sharing regulations)	Yes. Public and restricted material (following sharing regulations)	No
MAP components	INFO/RAC	Yes	Yes	Yes, all the material on platform	Yes, all the material on platform	Yes, all the material on platform	Yes
MAP partners	Stakeholders and researchers	Yes	No	No	Yes, Public and restricted material (following sharing regulations)	Yes, Public and restricted material (following sharing regulations)	No
Other users	Anonymous	No	No	No	Yes, only public material	Yes, only public material	No

# Next Steps

1. Refine the procedures of information search and retrieval in the geoportal by improving data tagging and metadatation
2. Apply new and ad-hoc facets in a way that filters work more efficiently in terms of speed and coherence of results
3. Continue implementing and improving GeoNode and MapStore tools in a way that InfoMAPNode can host a wider variety of data
4. Building up efficient document handling routines, to obtain a more effective document management system

For any question or doubts, please contact us. We are glad to give you our support!

[infomapnode@info-rac.org](mailto:infomapnode@info-rac.org)

InfoMAPNode helpdesk



Mediterranean  
Action Plan  
Barcelona  
Convention



- INFO/RAC
- National Focal Points Meeting
- Rome, Italy 7-8 June 2023

# THANK YOU FOR YOUR ATTENTION

Alessandro Lotti (INFO/RAC)  
[alessandro.lotti@info-rac.org](mailto:alessandro.lotti@info-rac.org)



Mediterranean  
Action Plan  
Barcelona  
Convention



● INFO/RAC  
● National Focal Points Meeting  
● Rome, Italy 7-8 June 2023



This presentation is licensed under CC-BY 4.0.  
You can reuse this presentation upon attribution.